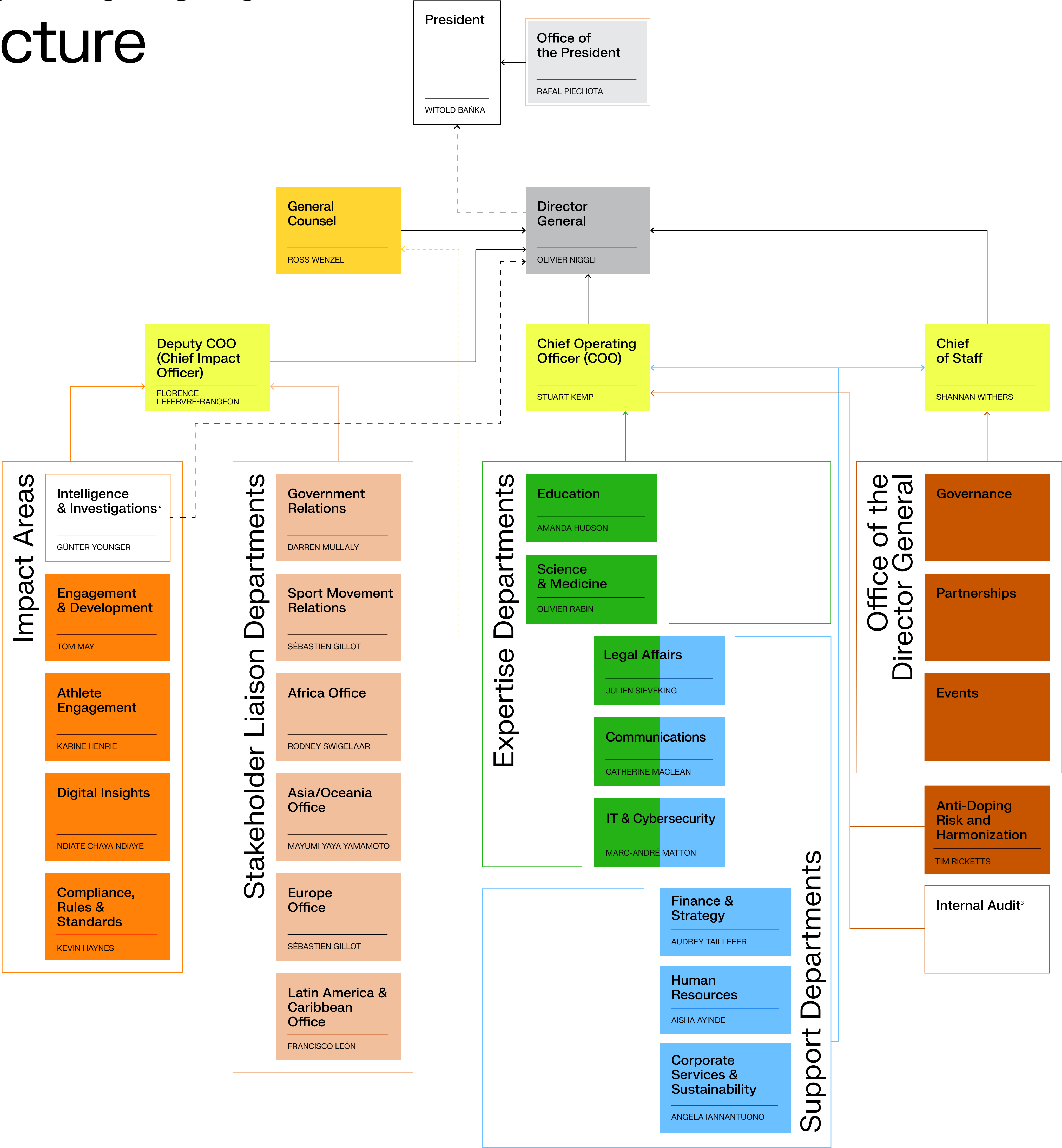


# Organizational Structure



Effective February 2026

<sup>1</sup> Also part of Stakeholder Liaison Departments.  
<sup>2</sup> In keeping with WADA's [Investigation Policy](#), the Intelligence and Investigations Department operates independently from the rest of the Agency. It may run any investigation that it deems appropriate without seeking prior consent or approval of WADA's Executive Committee, Foundation Board, President or Director General.  
<sup>3</sup> The Internal Audit function reports administratively to the Chief Operating Officer but functionally to WADA's Risk and Audit Committee.