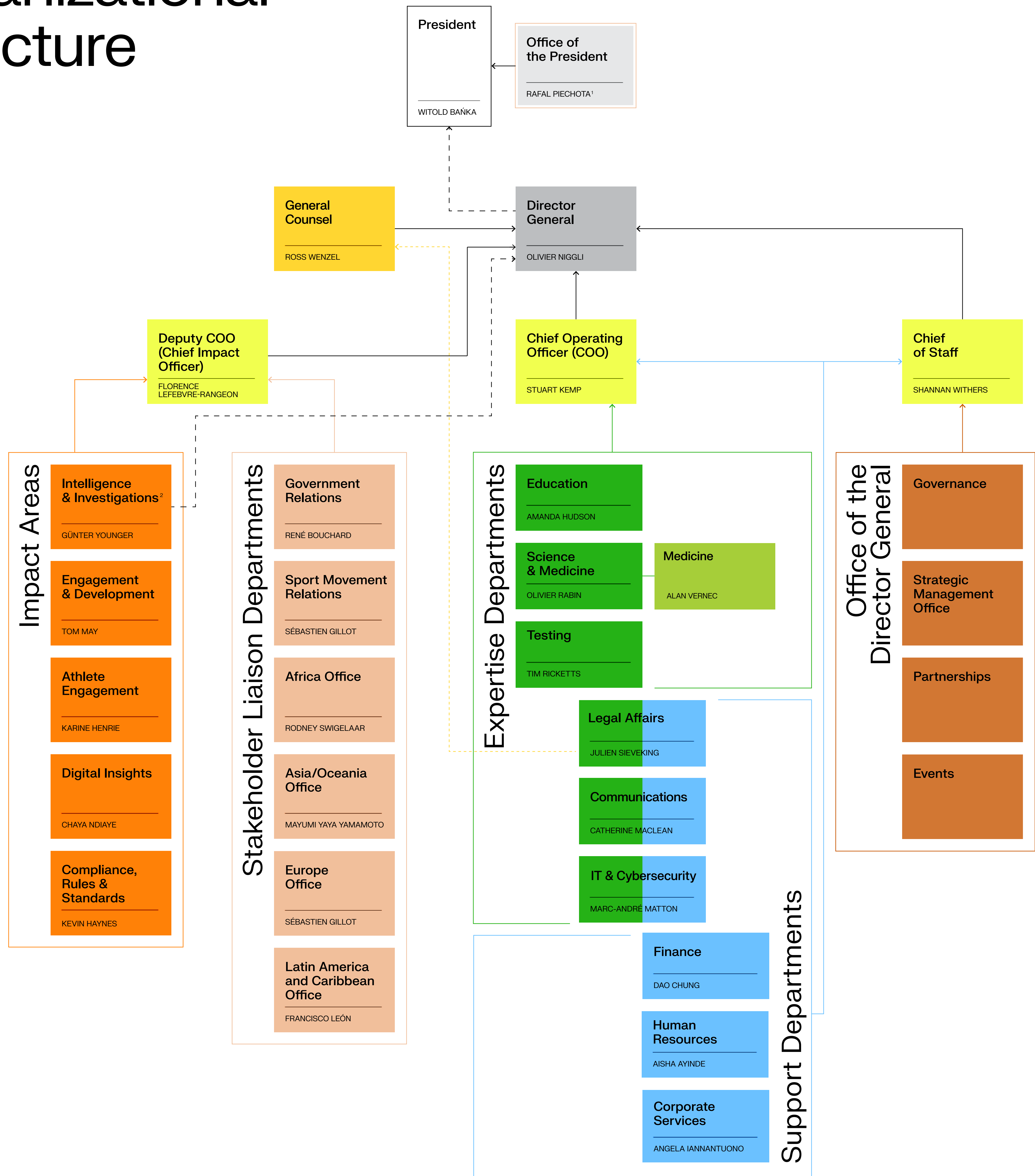


# Organizational Structure



Effective 1 September 2024

<sup>1</sup> Also part of Stakeholder Liaison Departments.  
<sup>2</sup> In keeping with WADA's [Investigation Policy](#), the Intelligence and Investigations Department operates independently from the rest of the Agency. It may run any investigation that it deems appropriate without seeking prior consent or approval of WADA's Executive Committee, Foundation Board, President or Director General.