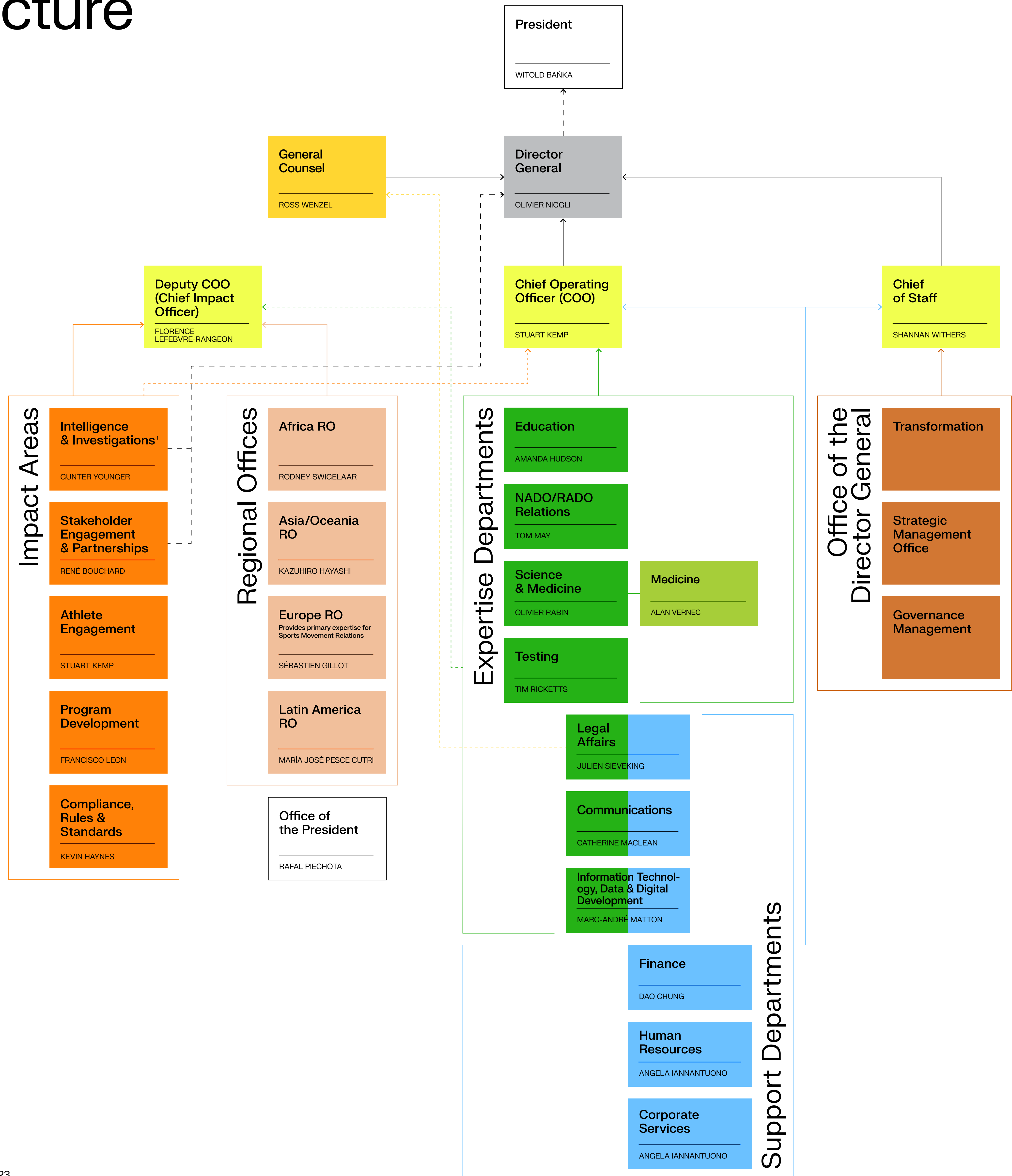


# Organizational Structure



Effective 1 January 2023

<sup>1</sup> In keeping with WADA's [Investigation Policy](#), the Intelligence and Investigations Department operates independently from the rest of the Agency. It may run any investigation that it deems appropriate without seeking prior consent or approval of WADA's Executive Committee, Foundation Board, President or Director General.